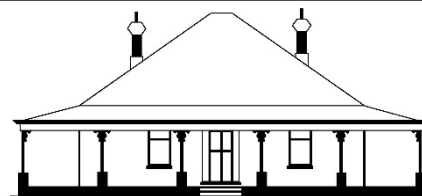


The Gosnells Community Men's Shed News



Lewis Homestead

April 2022

Vol. 10 # 10

Editor: Gordon Hamilton hamilton_g@bigpond.com

70 Lissiman Street, Gosnells, WA. PO BOX 330, Thornlie, WA 6988. ABN 38 030 506 750



Founded by the
Rotary Club
of Southern Districts
in 2012

Community Bank - Canningvale

Bendigo Bank

Proud sponsors of
Gosnells
Mens Shed



Proud partner of Act Belong Commit,
supporting good mental health
in our community.

Mentally Healthy WA actbelongcommit.org.au

Proudly supported by Amaroo Village, Lotterywest, City of Gosnells, Department of Veteran Affairs' Community Bank Canningvale (Bendigo Bank) & Act Belong Commit.

PATRON: Teresa Lynes

Office Bearers			
Chairman	<i>Allen Holloway</i>	Vice Chairman	<i>Geoff Wiltshire</i>
Secretary	<i>Phil Measday</i> secretary.gcms@gmail.com	Treasurer	<i>Arpad Pratsky</i>
Committee members: <i>Geoff Bowra; Chris Beckett; Alan Gordon and Scott Henderson</i>			
Workshop Manager: -----;		Shed Administrator: Fred Howe	
The Shed Phone number: 08 9398 4064;		Shed email – shedboss.gcms@gmail.com	

MISSION STATEMENT

The Gosnells Community Men's Shed promotes and fosters men's health and well-being in a friendly and safe environment.

VISION

To be recognised as a progressive community-based organisation working in the community.
To be a place where men of all ages and backgrounds meet in friendship.

VALUES

A respectful and caring environment where participation in activities and contribution to the efficient and harmonious operation of the Shed are recognised as being of equal value.

Diary Dates – Coming Events!

(See details further on in NL)

29 th Apr	Social BBQ at the Shed.
05 th May	Bacon & Egg Rolls 11:30am;
30 th May	WAMSA Zone Meeting.

Social BBQ Thursday 29th April

Come for a burger in a bun plus and some good fellowship at the Social BBQ lunch being held at Lewis House on Thursday 29th April commencing at 11:30am.
There the usual small fee of \$3 for the burger to defray the costs.

For catering purposes please let Geoff Bowra know if you are attending.

It is important to note that **COVID 19 rules** will need to be followed, including maintaining physical distancing and practicing good hygiene procedures.

CHAIRMAN'S Notes April 2022

The Finance and Fundraising Committee held a February meeting to discuss the budget predictions for 22/23. These predictions indicated that if membership remains at the same level and fixed costs also remained the same, we would incur a budget shortfall.

Your Shed! Our Shed! Our Future!

The Gosnells Community Men's Shed News

As membership fees have not been increased in recent years, and indeed fees were reduced during the Covid shutdown, we are now in a position where fees must increase.

We have not had fundraising from Bunnings sausage sizzles in over two years and these are unlikely to resume while Covid conditions exist.

A recommendation from the Finance and Fundraising committee was submitted to the Management Committee in March, and after robust discussion a decision was reached to set the Annual Membership fee at \$90.00, a small increase of only \$5.00 per year.

0o0

The Olive harvest has been completed and the olives taken to the processing plant at Jarrahdale to be crushed for oil. A grateful thanks to the small number of volunteers who assisted with the harvest.

0o0

We have been invited by Mens Sheds of WA to host the Zone meeting on **Monday 30th May**.

The meeting will be held in the Wiltshire room from 9.00am to 3.00pm.

The meeting agenda will be made available soon.

0o0

Due to the current Covid restrictions two more social functions have been cancelled.

Thanks to all members for your response to the restrictions applied at the shed, we can only hope for some relief in the coming months.

Allen Holloway
Chairman

SHED MANAGEMENT:

FACILITIES REPORT

The facilities group are keep up with the maintenance of the exterior of all the shed buildings. A termite report has been organised in respect to the workshop. The gardening chaps are keeping the grounds in good condition and we are preparing the area near the lower gardening shed for brick paving. Meanwhile some of the more active members have been harvesting olives both within and outside the shed area to have them pressed and ultimately produce some good organic virgin olive oil which will be on sale at a later date to the members.

Facilities organiser
Al Gordon

Members with Big Pond email addresses

Over the last few months we have experienced difficulty when sending out general emails to members. In particular members with Big Pond email addresses may not have received all of the emails sent out.

After investigation it has been determined that in some cases the general emails are being treated as spam by Big Pond email users. Members with Big Pond email addresses should check their spam folders to see whether emails from Secretary.gcms@gmail.com are being received.

We are continuing to look at solutions to this issue.

In most cases information regarding Members in general is also included in the Monthly shed newsletter. If you have any queries please contact the Secretary.

Health & Wellbeing

I have made contact with several members that have not been around the shed recently and the good news is that most of them are recovering well but slowly after major operations. Thanks to members that have contacted me about their health issues, our thoughts are with them.

A notice to all members with winter approaching it is very important to get your flu vaccinations done asap and also if you are eligible for the 4th Covid vaccination it would be to everybody's

Your Shed! Our Shed! Our Future!

The Gosnells Community Men's Shed News

best interest to have this done asap as well. We have been extremely lucky at the shed to this point in time as we have only had one member that has contracted Covid and had to isolate for 7 days but is now back at the shed having a laugh and a joke around the table (with his chocolate biscuits).

Welfare

In the past couple of months I have attended two workshops conducted by W A Men's Shed and it seems that moving forward the main focus is going to be on health & wellbeing which supports the new appointment by WAMSA of Rebecca Talbot. The Brunswick Junction workshop was extremely well attended with myself, Geoff Wiltshire & Alan Gordon attending. There was also a workshop at the RAAFA in Bullcreek which was a workshop for Welfare officers and some 36 welfare officers were in attendance and I found it well worthwhile. There is another workshop for Welfare Officers coming up at the end of April which will be attended by myself and also Alan Gordon.

We hope to have a talk at the Mens Shed in May conducted by Mens Regional Health Northam, more info to follow.

Once again, we need to be Covid safe at the shed and abide by current regulations put out by the Government.

Kind regards,
Graham Hughes
Welfare Officer 0419 514 631



WHEN IS THE BEST TIME TO GET THE FLU VACCINE?

It is recommended to vaccinate when the national influenza immunisation program starts, which is generally in April (source: vaccinehub.com.au/faq/when-best-time-get-flu-vaccine).

Safety & Risk Management subcommittee

The Management Committee would like to acknowledge the great effort by Ray Smith in monitoring the vaccination and compliance status of Members to ensure the Shed maintains compliance with the condition of our agreement with Amaroo and State Government Health requirements.

COVID 19 TESTING: (Hint)

There are many occasions these days for us as individuals to self-test using a RAT kit. Here is a link to a short video by a Melbourne Doctor, Dr. Eric Levi, on how to do it properly. Just cut and paste this link into your web browser. <https://www.youtube.com/watch?v=v3GsUARpPPc>

Information and Technology

SHED WEBSITE - MEMBERS AREA

Currently the member's area of the shed website is being constructed.

This area of the website will be strictly for members only.

When ready this area will be accessed by members using their email addresses and a password.

This information will remain confidential and secure.

The member's area will contain notice of social events, annual financial statements, committee member details, rules of association, health information, member's code of conduct, serious injury and illness policy, fire safety and evacuation procedures and attendance by disabled persons and other matters.

The Gosnells Community Men's Shed News

Look out for an email inviting members to register their email and passwords for login to the member's area.

If you haven't had a chance yet the shed's website address is <https://gosnellsmensshed.org/> have a look.

Phil Measday, Secretary

Regarding the **shed website**, the committee is interested in finding any members interested in helping maintain the website. Full training and assistance is available. If you have reasonable computer skills this could be a good opportunity to make a contribution to the shed's activities.

Please email the Secretary at secretary.gcms@gmail.com if you wish to express an interest.

Regards

Phil

Workshop Managers Report

Bill Hughes, Workshop Manager, advised that there were no Health and Safety incidents to report for previous month in the workshop.

Work in Progress

- Casket for one of the members (for his mother) is being built. Not a usual request for the workshop.
- Honour Board for Roleystone Mens Shed—no cost
- Waiting on replies to all other quotes sent out to schools in Gosnells area.
- David is making a number of saw handles.
- Inspected private/company equipment for donation, most equipment unsuitable for shed. Still one visit outstanding.
- Bassendean Mens Shed to visit to obtain information on making buddy benches.

Workshop Maintenance

All off cuts of wood have been cleared out of the workshop. Also binned was overnight delivery of junk left in workshop.

The CNC Router has had all damaged wiring and failed proximity switches repaired or changed.

We need to purchase a few more ball nose cutters with left over grant money for router.

Lunches at the Shed

Consideration is being given to commencing a program of providing lunches at the Shed every Thursday.

A meeting to discuss how this might work will be held at the Wiltshire Room on Tuesday, 19 April commencing at 10.00am.

Any member who wishes to contribute to the discussion will be most welcome.

We will have Bacon and Egg rolls on Thursday 5th May at 11.30am. Discussion followed on cost of lunch-\$5.

FUND RAISING:

“CONTAINERS FOR CHANGE”

This is ongoing so please continue to bring in your recyclable drink containers.

Hi Everyone

It has become clear that our recycling efforts with the exception of the Container for Deposit scheme has become a rubbish recycling exercise.

Unfortunately many of the items brought to the shed are not able to be recycled.

The Committee has decided that from now on we will only recycle approved containers through the Container Deposit Scheme.

Your Shed! Our Shed! Our Future!

The Gosnells Community Men's Shed News

This decision is effective immediately.

In regard to recycling please note the following suggestions may be of assistance to members.

Alternative Recycling options:-

- Batteries can be recycled at Battery World - A voucher may be presented to the person who takes the batteries for recycling. This can be used to purchase more batteries.
- Ink Cartridges at Libraries and various Generic Sales outlets.
- IT Equipment [NOT CARTRIDGES] can be recycled at Sam's Spares - admin@samsspare.org Located at Jacaranda House, 15 Queen Street, Gosnells.

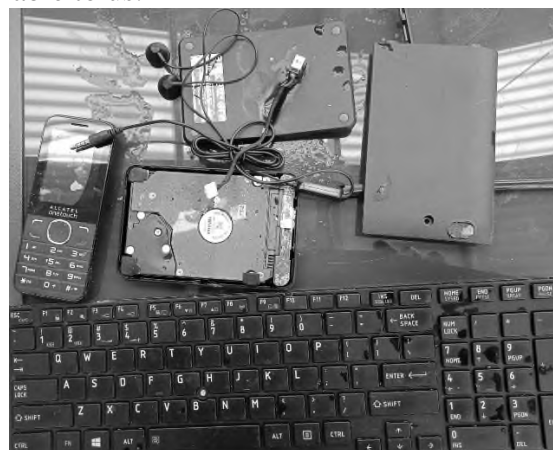
Sam is Autistic and is a Whiz at refurbishing Computers and has just received "Not for Profit" Status. Someone we should support.

Gosnells Community Men's Shed Inc.

Items dumped at the Shed which did not fit the description of "stuff" suitable for recycling through the facilities available to us.



Not acceptable plastic tops



E waste

Please use your own council provided yellow recycle bin where permitted

Proposed Women's Shed in Gosnells

Notice to Members.

As most members are aware our Shed, as with others, has been under some pressure to consider allowing women to participate.

Recently the Shed has been approached by the City of Gosnells to assist in the development of a Women's Shed within the city.

This is a Council initiative led by the Mayor and supported by senior staff.

A public 'expression of interest' meeting, currently being arranged by Council and likely to be held early in May, will determine if the proposal is valid.

Current indications are that it will be going ahead. That meeting will probably result in the appointment of a working group to carry the proposal forward.

It is emphasized that the Women's Shed will be a stand-alone organization separate from our Shed and will manage its own affairs.

It is our understanding that Council already has a suitable site in mind.

Following the above process, GCMS has been requested to assist by conducting woodwork familiarization and training sessions including induction and safety assessment, over a number of weeks on Saturday mornings and Wednesday afternoons until such time as suitable premises are located and prepared for use as a Women's Shed.

After the Women's Shed becomes operational, GCMS may also be requested to assist in the transition arrangements.

Your Shed! Our Shed! Our Future!

The Gosnells Community Men's Shed News

This is an opportunity which our Shed should wholeheartedly embrace and represents a rare community engagement project which will enable women in Gosnells to foster an identity and environment similar to the one which we enjoy.

Ideally, our Shed and the 'daughter' Shed will maintain a co-operative but arms-length relationship going forward.

Council's proposal is timely and should free our Shed from the need for further consideration of the rather contentious female membership issue.

Members are encouraged to support the proposal and assist where they are comfortable to do so.

Allen Holloway
Chairman
Gosnells Community Men's Shed Inc.

SOCIAL SCENE

Social Events

A number of social events due April / May have been either deferred or a decision has been made not to participate.

TABLE TENNIS:

Games start around 9.00 am Monday mornings in the Wiltshire Room and go until we are exhausted, usually around 10.30 am. No great skill or stamina involved. We are strictly a fun group!

CYCLING GROUPS:

GOS GARBAGE CYCLING GROUP

No news is good news!

COFFEE CHEETAHS BIKE MOB



Your Shed! Our Shed! Our Future!

The Gosnells Community Men's Shed News

Hi Everyone, Phew.....Hope I get this wee report in before the 'cut-off' date of 'Commencement of Business' (COB) 14th of April! Some of the new (Shed) members may not know about us?.....We're just a small bunch of 'old-farts' who like to ride a bike, while nattering to the bloke next to us, and I'd say the main reason we go out each Thursday morning is, the benefits the 'social side' gives us! We're all of similar vintage, and don't wear lycra, but do recommend a bright flouro top, to help motorists see us and hopefully avoid hitting us! We're usually out for 'about 3 hours' and always stop at a cafe for a break, for about 45 minutes.

This month, well, March really, we had as always, some great rides, with the 'feature ride' being to Jandakot Airport, a fair distance with a strong easterly wind blowing all morning, but the effort was worth it, with a great view of the runway with aircraft taking-off and landing every minute. I believe Jandakot is Australia's busiest airport in actual aircraft manoeuvres. Will admit most of us were 'worn-out' by the time we rolled back into Gosnells, but we all agreed we'd had a great time! Distance was about 40 kms, which is twice as far as many outings.

David Gardiner 0417 174 893 Photo **Graeme Gurney**

GOLF NEWS Feb / March 2022.

Over the past four weeks we have played at Hillview with 9 players hitting the course in clear conditions. At Armadale we had 13 players on a warm and clear day. We then had our first game at Maylands with 13 players attending on an overcast and humid day. Following the game a few players stayed at the course and had lunch. Our last game was at Armadale with 15 players turning out in great conditions.

Overall winners have been Rob S, Drew, Taffy and Phil. Closest to the pin winners have been Ken, Taffy, Chris B and Bill Hughes. Longest putt winners have been Vic and Tom.

The following players have been playing without much luck over the past few weeks Chris B, Ken, Tom and Chris B.

Ken birdied Hole No 3 which is a par 3 at Hillview (Classic 9). At Maylands Taffy birdied Hole No 4 which is a par 4.

Welcome to new member Bill Harris.

Until next month, happy golfing.

Kevin Cragan.



Photography Group:

The trip to Fremantle was cancelled due to a lack of response.

Your Shed! Our Shed! Our Future!

The Gosnells Community Men's Shed News

Next meeting:

When: Tuesday 3 May 2022, 2 pm
Where: Geoff Wiltshire Room.
What on: Discussion on work flow for processing your photos.
Discussion on future photo trips.

André Hoareau
0457 680 489
computing.gcms@gmail.com

Computer and Technology Group:

All the classroom PC's are now working and available for members use.

Technology Help Desk Friday 9:30 – 12pm

NBN?, Baffled by your phone, want to do more with your iPad, PC too slooow.

Friday's one on one sessions are available. I can provide help in any area of technology. This includes PC's, laptops, tablets, iPads, phone, camera, TV's, photography and any software package (Windows, IOS or Android). I'm happy to try and resolve your technology issues.

Book a time:

Put your name down for the next available Friday's time slot and describe your problem on the whiteboard in the computer room. Consults are up to two and a half hours. No House calls!

Windows 10 Classes Mondays at 9:30 – 12pm

The Windows 10 classes for beginner's is carrying on with two shedeers. We have covered using the internet with your favourite browser. Some tips learnt:

- Opening multiple tabs using the centre mouse button from a single screen. Example would be reading the news or opening various search result at the same time.
- Open new tabs with the + button.
- Swapping between various tabs, changing their order.
- Dragging commonly visited web page to your favourites / bookmark toolbar for easy access in the future.

We then went on to learn how to use Google Maps to plan a trip and then use the plan on your phone as a NavSat system or print out the directions.

Free to all shed members.

André Hoareau
computing.gcms@gmail.com

Recipe

Your Shed! Our Shed! Our Future!



MOROCCAN PUMPKIN, SWEET POTATO AND CARROT SOUP

Serves 4 Prep Time 20 min Cook Time 30 min

STUFF YOU NEED

1 Litre vegetable or chicken stock/broth; 1 cup coconut milk (canned);
500 g (1 lb.) pumpkin peeled and chopped; 500 g (1 lb.) sweet potato peeled and chopped;
500 g (1 lb.) carrots peeled and chopped;
1 large onion chopped; 1 garlic clove crushed; 2 tsp. ground cumin
1 tsp. ground coriander; 1 tsp. paprika; 1/2 tsp. nutmeg;
1/2 tsp. chilli powder; 1 tbs. macadamia oil; salt and pepper

NOW WHAT

1. Heat oil in a large saucepan on medium heat. Add the onion and garlic, saute for about 2 minutes.
2. Add the spices and stir for another minute.
3. Add pumpkin, sweet potato and carrot, keep stirring for a further 5 minutes.
4. Add the stock/broth, cover and bring to the boil.
5. Reduce the heat to medium and simmer for 20-30 minutes.
6. Add the coconut milk and simmer for a further 5 minutes.
7. Take off the heat, then carefully use a stick blender or a blender to whiz the soup until nice and smooth.
8. Season with salt and pepper.

Do you have a recipe to share??

MEMBERS:

As of 11th April we have 180 Members.

Welcome to the following Shedders who have recently joined GCMS:-

Michael Flavel, Jayden Wake, Geoff Franklin:

Can any new members, who have not been photographed, please stop by the Office / computer room so we can arrange to take their photograph for their Name badges.

Members below all recently had their photographs taken – Thank you!

The Gosnells Community Men's Shed News



Geoff Franklin



Jayden Wake



Michael Flavel



HOUSE CLEANING:

Cleaning Roster

We are in need of more members to join our merry band on the cleaning roster.

There are 17 of us on the roster working in pairs once a week on Mondays. That leaves one member orphaned. At present, we are rostered on once every nine weeks.

The cleaning is not onerous and takes no more than one hour to complete.

We clean Lewis House and the office of the Workshop Manager. Tasks include, vacuum/mop floors, clean toilets, empty bins, and replenish toilet consumables (if necessary). Cleaning products are provided. These are only light duties and definitely **NO EXPERIENCE NEEDED**.

As an organisation run by solely by volunteers, we rely on the support of all members to help keep the operations going. Don't sit back and leave it to someone else, otherwise, it will be left to the few to carry the burden. Participation is rewarding and you will be helping make the Shed more enjoyable for your fellow Sheddies.

If you can spare the time and are physically able, please come forward and I will add you to the roster.

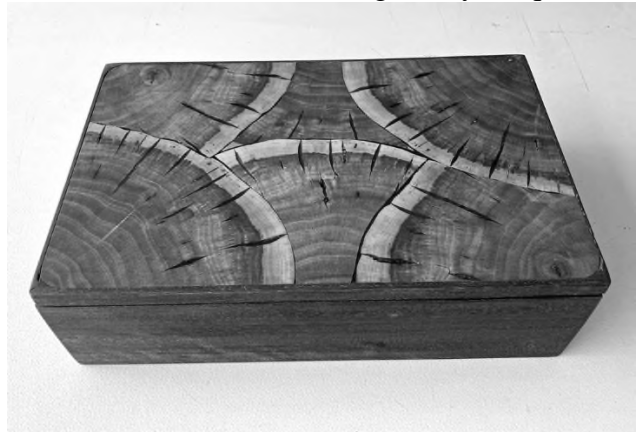
Thanks

Mick (Alan's cleaning buddy)

Please volunteer at the front Office.

WHAT HAVE OUR MEMBERS BEEN UP TO!

Laurie has been busy again, here are some photos of his latest creation featuring a very unique lid.



Your Shed! Our Shed! Our Future!

The Gosnells Community Men's Shed News

The Chemist.

Arriving home, a husband was met by his sobbing wife. Tearfully she explained, "The Chemist. He insulted me this morning on the phone. I had to call multiple times before he would even answer the phone."

The husband drove down to confront the Chemist to demand an apology.

Before he could say more than a word or two, the Chemist said "Now, just a minute...

Mate, hear my side of it.

This morning the alarm failed to go off, so I was late.

Without breakfast I hurried out to the car to realise I'd locked the house with house and car keys inside. I Had to break a window to get my keys."

Driving a little too fast, I got a speeding ticket, about three streets from the store, I had a flat tyre."

"When I finally got to the store a bunch of people were waiting for me to open up.

I started waiting on these people,

All the time the damn phone never stopped ringing.

Then I had to break open a bag of one and two dollar coins against the cash register drawer to give change and they spilled all over the floor.

I had to get down on my hands and knees to pick up the dollar coins and the phone was still ringing.

When I came up I cracked my head on the open cash drawer which made me stagger back against a showcase with bottles of expensive perfumes on it.

Half of them hit the floor and broke.

Meanwhile, the phone is still ringing with no let up,

And I finally got to answer it.

It was your wife. She wanted to know how to use a rectal thermometer.

And believe me, mate, as God is my witness, all I did was tell her.

She was outside pulling weeds on a hot summer day when her husband walked up and asked her what they were having for dinner.

Irritated by the thought of him sitting in the air conditioned house while she laboured away on the weeds, she snapped, "I can't believe you're asking me about supper right now! Pretend I'm out of town, go inside and make dinner yourself!"

So he went back in the house and fixed himself a big steak, potatoes, garlic bread, and a tall beer.

His wife walked in just about the time he was finishing up and asked, "Where's my dinner?"

"Huh?"

I thought you were out of town."

Last night the wife asked me if I had seen the dog bowl?

I said "I didn't know he could!"

'You know, somebody actually complimented me on my driving today. They left a little note on the windscreen. It said, 'Parking Fine.' So that was nice.'

The Gosnells Community Men's Shed News

GCMS Local and Family History Group

Did you know? Pt 6 The Bell(e)s of Gosnells

Archibald Day Bell was born in Highfield, Dirlton, East Lothian, Scotland on September 23 1835. He became a ship's Captain, and settled in Dunedin, Otago, New Zealand. His wife to be Jessie Margaret Hay, was born in Keith, Morrayshire, Scotland on June 29 1841, and in New Zealand, after their marriage on 15th March 1864, Jessie subsequently gave birth to three sons and ten daughters. Captain Bell died of a heart attack, on September 8, 1900, en-route, moving his family to WA, to take up the post as Commandant of Fremantle Port. His own father, (dying 4th May 1885) and other siblings, had moved Ripley, Dodge, Minnesota. Jessie stayed on with the family at 37 Chatsworth Road, Highgate, Perth until she died there on 17th August 1912, leaving an estate of £83/11/10d.

Two of their daughters were to have a direct involvement with Gosnells. Violetta Florence Bell, born in 1880, and her younger sister, 1884, Agatha Lillian Bell, known as 'Gathie' – had interests with property in Gosnells. Agatha of course, married our Edward Thomas Lewis, to set up the Lewis Homestead, but her sister 'Vi' had a more turbulent life.



Violetta met Percy Patrick Bouvlet M Rattigan in Perth: he was a near neighbour and friend of Edward Thomas, and probably that is how the sisters first met their husbands. Percy's life ended tragically...

He was born in County Roscommon, Ireland on November 26th, 1869, and with his mother and 8 siblings, but no father, arrived in Melbourne as Assisted Ticket Passengers (No 760) on August 3rd, 1883 on the maiden voyage of the SS Pathan.



By 1903 he was living at 614 Hay Street, Perth, and employed as a Manager for Foy and Gibson, the well-known Department Store. He married Violetta in 1904. By 1906, he had purchased Lot 31, now Astley Street in Gosnells, a year before Edward bought 1099, but was paying reduced Rates of 2% on an asset value of 150 pounds, as the land was undeveloped.

However, whatever his plans, he committed suicide having been sacked by Foy and Gibson. As reported in the Perth Daily News, the Acting Coroner, J C Brickhill JP, found the death had been caused by a single revolver bullet to the head. On the 2nd April 1909, he had been sacked; on the next day he bought a revolver and was found dead in scrub on the south shore of Monger's Lake on the 4th. Constable Suntor was called, and gave testimony he'd found a note addressed to Violetta, stating he was the first of his family to ever be sacked, and he could not live with the shame. Buried at Karrakatta Cemetery, Perth.



Subsequently Violet sold the Astley Street land to George Nelson, and moved to Subiaco having vacated Hays Street. In 1913 she was working at the newly opened Exchange Hotel in Pingelly as a barmaid, and by 1914 had married Joseph Malloy (1876 – 1965) and a son in 1915. She died in 1970 and is buried at Peakhurst, NSW.

Next Month: The Armstrong Family – early pioneer days and some shenanigans!

The Gosnells Community Men's Shed News

Please contact: beckett226@gmail.com or telephone afternoons on 9398 1572 if you are interested in local, or your family's history. Help will be provided!

USELESS INFORMATION

Coin or button Batteries. CR2025 vs CR2032.

I recently had to replace the battery in the doorbell external unit. Turned out to be a CR2032 'coin battery'. Fortunately I had a new spare in its bloody 'child resistant' pack. You need a pair of scissors to cut the battery free from the package. I am finding a lot of this 'child resistant' packaging is also just about 'Grand Parent' resistant as well!

Anyway I like to keep a spare on hand because I am finding them in more and more items around the house. So off to the big green warehouse to buy a spare. I know it is 3 volts and CR20???. I found that there are at least 2 CR20?? Batteries to choose from CR2025 & CR2032. So I bought a pair securely packaged batteries only to find I had grabbed the wrong one. Today I purchased a couple of the CR2032 batteries.

So I asked Dr Google what is the difference? And was duly educated. The CR tells me that they are basically Lithium batteries. The '20' part of the numbering is the battery diameter in mm's. The last two numbers 25 & 32 are the thickness of the battery. 2.5mm (1/10th inch) and 3.2mm (1/8th inch). The thicker 3.2mm battery has more capacity than the thinner 2.5mm one. Both are three volts.

Because the CR2032 is 0.7mm thicker than the CR2025 it can deliver current to the load for a bit longer. An average CR2032 can nominally deliver 225 mAh while the average CR2025 can nominally only deliver 160 mAh. The actual amp hours is largely dependent on the load, so depending on your circumstances you might not see as much of a difference. Both have a maximum recommended discharge of 0.2 mA.

The City of Gosnells Community Art Exhibition and Awards is an annual competition open to all emerging and professional artists in Western Australia.

Entries are now open for the Community Art Exhibition and Awards 2022. Enter [online](#) or print and complete the [entry form](#). Entries close: Wednesday 27 April, 4pm

The exhibition offers a prize pool of \$9,500 across nine award categories.

Entries will be exhibited at: The Agonis, 2232 Albany Highway, Gosnells

Saturday 21 May – Sunday 29 May 2022.

Award Categories

- Acrylic
- Pastel, Pencil, Pen and Watercolour
- Oil
- Photography and Digital Media
- Mixed Media and Three Dimensional Sculpture
- Youth Award (12 – 17 years)
- The City in Focus Award
- Primewest People's Choice Award
- Local Artist Award

Entry Fees

\$30 Adults (per artwork). \$8 Youth (per artwork)

Inclusive of GST. Booking fees apply for online entries. A card surcharge of 0.47% is charged for payments made at the Civic Centre with a credit card.

Your Shed! Our Shed! Our Future!

The Gosnells Community Men's Shed News

Conditions of Entry

For further information, please contact the City of Gosnells on 9397 3000 or

COGARTS@gosnells.wa.gov.au

The City of Gosnells Community Art Exhibition and Awards is sponsored by Primewest.



Since I bought this toy for my dog...
no more salesmen,
break-ins, or friends popping in
unannounced.
Just peace & quiet.



**We go fortnightly
From Easter
Sunday**



**In a new time slot
11 to 1
Streaming
heritagefm.net**

Your Shed! Our Shed! Our Future!

Possibly the best cartoon of this century



I personally would suggest government. They never go to jail.

